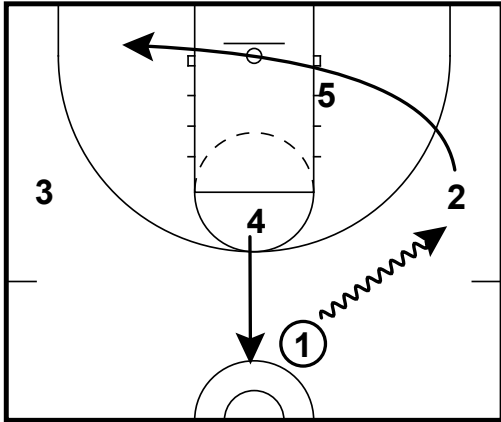


### All Teams

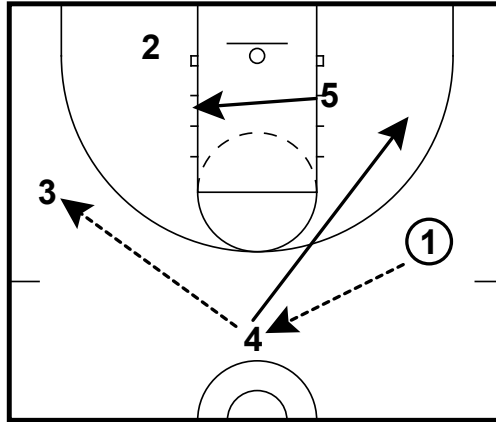
Wildcat - Zone Offense  
Offense



1 initiates the offense with a dribble at the wing sending the wing to opposite short corner.

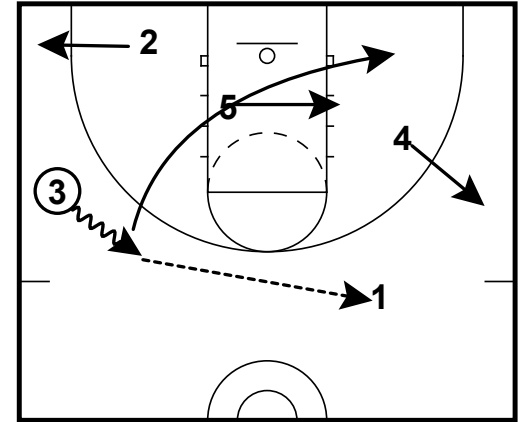
### All Teams

Wildcat - Zone Offense  
Offense



### All Teams

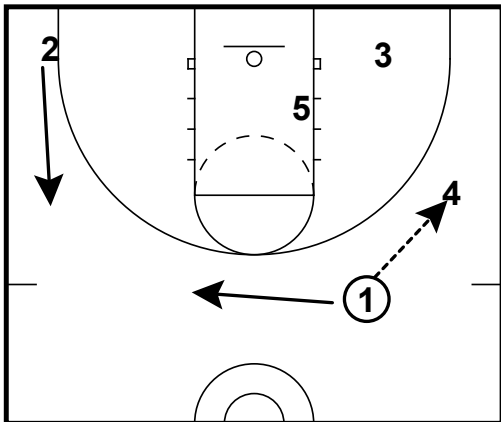
Wildcat - Zone Offense  
Offense



1 will always stay on top, behind the weakside defender on top of the zone. The 4 will always cut to weakside after reversing the ball. 5 will work towards the ballside. If 2 can't catch in the short corner, he can move to corner. \*\*Focus is to get the ball inside to 5, or reverse the ball back through 1.

### All Teams

Wildcat - Zone Offense  
Offense

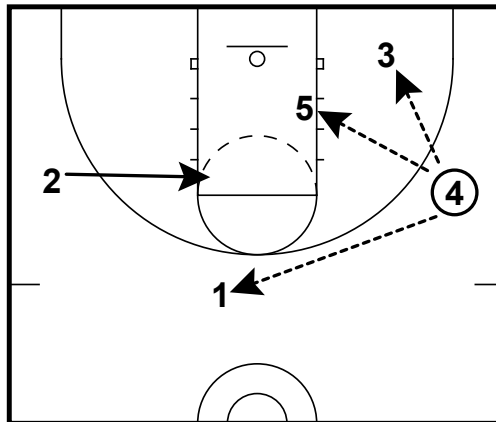


After the pass back to 1, 3 will cut to opposite short corner.

Rule - Anytime the ball gets reversed, the players cuts to opposite short corner. 4 in the short corner, lifts to wing. 2 in short corner will lift to weak side wing.

### All Teams

Wildcat - Zone Offense  
Offense



Weak side threat is always looking to find space and if middle presents itself the weak side threat should flash middle.

Key components towards maintaining balanced zone attack -

1. Post - working ball side
2. Strong side threat - player besides the person with the ball
3. Ball reversal option
3. Weak side threat