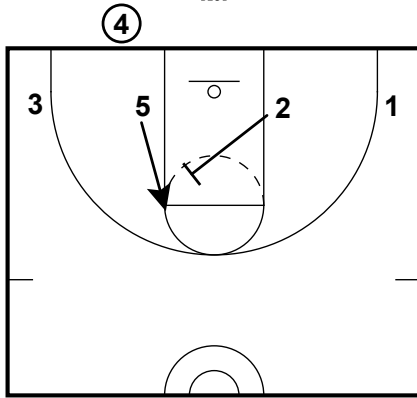


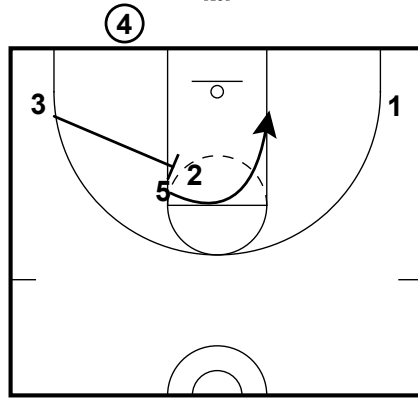
All Teams

BLOB - 4 Low
BLOB



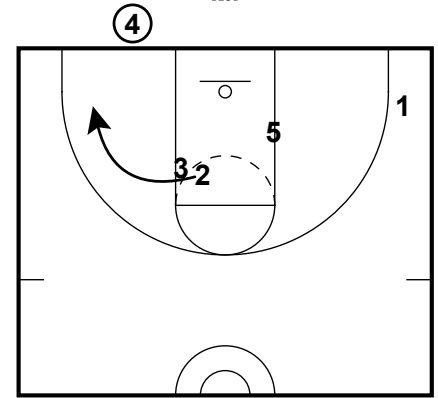
All Teams

BLOB - 4 Low
BLOB



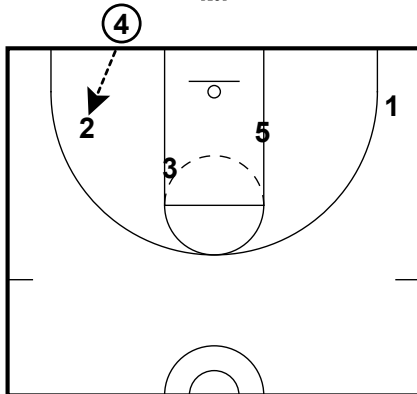
All Teams

BLOB - 4 Low
BLOB



All Teams

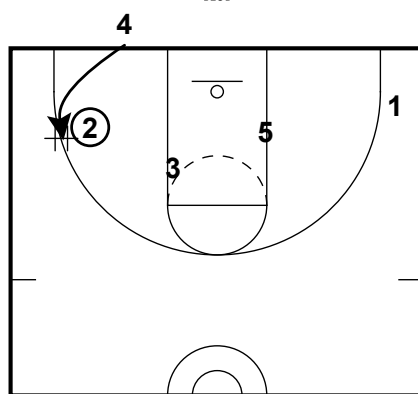
BLOB - 4 Low
BLOB



2 takes shot if open on the catch

All Teams

BLOB - 4 Low
BLOB



If 2 doesn't take shot, option 1 is 4 coming for hand off from 2. Make sure 3 clears to top of key for natural pitch from 4.

All Teams

BLOB - 4 Low
BLOB

